



Embroidery Institute Tutorial for PE-Design 9

Built in fonts for Pe-design NEXT

These are images of the built in fonts that are included in PE-design NEXT. In NEXT these built in fonts can be outlined unlike previous versions.

The charts display the number of the font, uppercase letter, lower case letters, numbers and some of the symbols. If a hollow box is displayed, then that character is not available for that font set. Any font set without numbers will display Font 1 in the name.

<p>FONT 1 A B C D E F G H I J K L M N O P Q R S T U V W X Y Z a b c d e f g h i j k l m n o p q r s t u v w x y z 1 2 3 4 5 6 7 8 9 0 ! @ # \$ % & * () ? Æ È Ò â ¥ Ø ñ</p>	<p><i>FONT 2</i> <i>A B C D E F G H</i> <i>I J K L M N O P Q</i> <i>R s P U V W X Y Z</i> <i>a b c d e f g h i j k l m n</i> <i>o p q r s t u v w x y z</i> <i>1 2 3 4 5 6 7 8 9 0</i> <i>! @ <input type="checkbox"/> <input type="checkbox"/> <input type="checkbox"/> & <input type="checkbox"/> () ?</i> <i>Æ <input type="checkbox"/> <input type="checkbox"/> á <input type="checkbox"/> Ø ñ</i></p>
<p>FONT 3 A B C D E F G H I J K L M N O P Q R S T U V W X Y Z a b c d e f g h i j k l m n o p q r s t u v w x y z 1 2 3 4 5 6 7 8 9 0 ! <input type="checkbox"/> <input type="checkbox"/> <input type="checkbox"/> <input type="checkbox"/> & <input type="checkbox"/> () ? Æ <input type="checkbox"/> <input type="checkbox"/> <input type="checkbox"/> <input type="checkbox"/> Ø <input type="checkbox"/></p>	<p>FONT 4 A B C D E F G H I J K L M N O P Q R S T U V W X Y Z a b c d e f g h i j k l m n o p q r s t u v w x y z 1 2 3 4 5 6 7 8 9 0 ! @ # \$ % & * () ? Æ È Ò â ¥ Ø ñ</p>





Embroidery Institute Tutorial for PE-Design 9

Built in fonts for Pe-design NEXT

<p><i>Font 5</i> <i>ABCDEFGHIJKL</i> <i>MNOPQRST</i> <i>UVWXYZ</i> <i>abcdefghijklmn</i> <i>opqrstuvwxyz</i> <i>1234567890</i> <i>!□□□□&□()?</i> <i>Æ□□á□Øñ</i></p>	<p>Font 6 ABCDEFGH IJKLMNOPQ RSTUVWXYZ abcdefghijklmn opqrstuvwxyz 1234567890 !@□□□&□()? Æ□□â□Øñ</p>
<p>Font 7 ABCDEFGH IJKLMNOPQ RSTUVWXYZ abcdefghijklmn opqrstuvwxyz 1234567890 !@#%&*()? ÆÈÔâ¥Øñ</p>	<p>Font 8 ABCDEFGH IJKLMNOPQ RSTUVWXYZ abcdefghijklmn opqrstuvwxyz 1234567890 !□□□□&□()? Æ□□□□Ø□</p>





Embroidery Institute Tutorial for PE-Design 9

Built in fonts for Pe-design NEXT

<p>FONT 9 A B C D E F G H I J K L M N O P Q R S T U V W X Y Z a b c d e f g h i j k l m n o p q r s t u v w x y z 1 2 3 4 5 6 7 8 9 0 ! □ □ □ □ & □ () ? Æ □ □ □ □ Ø □</p>	<p>FONT 10 A B C D E F G H I J K L M N O P Q R S T U V W X Y Z a b c d e f g h i j k l m n o p q r s t u v w x y z 1 2 3 4 5 6 7 8 9 0 ! @ □ □ □ & □ () ? Æ □ □ á □ Ø ñ</p>
<p>FONT 11 A B C D E F G H I J K L M N O P Q R S T U V W X Y Z a b c d e f g h i j k l m n o p q r s t u v w x y z 1 2 3 4 5 6 7 8 9 0 ! □ □ □ □ & □ [] ? □ □ □ □ □ □ □ □</p>	<p>FONT 12 A B C D E F G H I J K L M N O P Q R S T U V W X Y Z a b c d e f g h i j k l m n o p q r s t u v w x y z 1 2 3 4 5 6 7 8 9 0 ! □ □ □ □ & □ () ? □ □ □ □ □ □ □ □</p>





Embroidery Institute Tutorial for PE-Design 9

Built in fonts for Pe-design NEXT

<p>FONT 13 A B C D E F G H I J K L M N O P Q R S T U V W X Y Z abcdefghijklmnopqrstuvwxyz opqrstuvwxyz 1234567890 !□□□□&□()? □□□□□□□□</p>	<p><i>FONT 14</i> <i>A B C D E F G H</i> <i>I J K L M N O P Q</i> <i>R S T U V W X Y Z</i> <i>abcdefghijklmnopqrstuvwxyz</i> <i>opqrstuvwxyz</i> <i>1234567890</i> <i>!□□□□&□()?</i> <i>□□□□□□□□</i></p>
<p>FONT 15 A B C D E F G H I J K L M N O P Q R S T U V W X Y Z abcdefghijklmnopqrstuvwxyz opqrstuvwxyz 1234567890 !□□□□&□()? □□□□□□□□</p>	<p>FONT 16 A B C D E F G H I J K L M N O P Q R S T U V W X Y Z abcdefghijklmnopqrstuvwxyz opqrstuvwxyz 1234567890 !□□□□&□()? □□□□□□□□</p>





Embroidery Institute Tutorial for PE-Design 9

Built in fonts for Pe-design NEXT

<p>FONT 27 ABCDEFGH IJKLMNOPQ RSTUVWXYZ</p> <p>□□□□□□□□□□□□□□ □□□□□□□□□□□□ □□□□□□□□□□□ □□□□□□□□□□□ □□□□□□□□□□</p>	<p>FONT 28 ABCDEFGH IJKLMNOPQ RSTUVWXYZ</p> <p>□□□□□□□□□□□□□□ □□□□□□□□□□□□ □□□□□□□□□□□ □□□□□□□□□□□ □□□□□□□□□□</p>
<p>FONT 29 ABCDEFGH IJKLMNOPQ RSTUVWXYZ</p> <p>□□□□□□□□□□□□□□ □□□□□□□□□□□□ 1234567890 □□□□□□□□□□ □□□□□□□□</p>	<p>FONT 30 ABCDEFGH IJKLMNOPQ RSTUVWXYZ</p> <p>abcdefghijklmnop opqrstuvwxyz 1234567890 !@#\$%&*()? Æ È Ò á ÿ Ø ñ</p>





Built in fonts for Pe-design NEXT

<p>FONT 31 ABCDEFGH IJKLMNOPQ RSTUVWXYZ abcdefghijklmn opqrstuvwxyz 1234567890 !@#\$%&*()? ÆÈÔâ¥Øñ</p>	<p>FONT 32 ABCDEFGH IJKLMNOPQ RSTUVWXYZ abcdefghijklmn opqrstuvwxyz 1234567890 !@#\$%&*()? ÆÈÔâ¥Øñ</p>
<p>FONT 33 ABCDEFGH IJKLMNOPQ RSTUVWXYZ abcdefghijklmn opqrstuvwxyz 1234567890 !@#\$%&*()? ÆÈÔâ¥Øñ</p>	<p>FONT 34 ABCDEFGH IJKLMNOPQ RSTUVWXYZ abcdefghijklmn opqrstuvwxyz 1234567890 !@#\$%&*()? ÆÈÔâ¥Øñ</p>





Built in fonts for Pe-design NEXT

<p>FONT 35 ABCDEFGH IJKLMNOPQ RSTUVWXYZ abcdefghijklmn opqrstuvwxyz 1234567890 !@#\$%&*()? ÆÈÔâ¥Øñ</p>	<p>FONT 36 ABCDEFGH IJKLMNOPQ RSTUVWXYZ abcdefghijklmn opqrstuvwxyz 1234567890 !@#\$%&*()? ÆÈÔâ□Øñ</p>
<p>FONT 37 ABCDEFGH IJKLMNOPQ RSTUVWXYZ abcdefghijklmn opqrstuvwxyz 1234567890 !@#\$%&*()? ÆÈÔâ□Øñ</p>	<p>FONT 38 ABCDEFGH IJKLMNOPQ RSTUVWXYZ abcdefghijklmn opqrstuvwxyz 1234567890 !@#\$%&*()? ÆÈÔâ□Øñ</p>





Embroidery Institute Tutorial for PE-Design 9

Built in fonts for Pe-design NEXT

<p>FONT 39 ABCDEFGH IJKLMNOPQ RSTUVWXYZ abcdefghijklmn opqrstuvwxyz 1234567890 !@#\$%&*()? Æ È Ò â □ Ø ñ</p>	<p>FONT 40 ABCDEFGH IJKLMNOPQ RSTUVWXYZ abcdefghijklmn opqrstuvwxyz 1234567890 !@#\$%&*()? Æ È Ò â □ Ø ñ</p>
<p>FONT 41 ABCDEFGH IJKLMNOPQ RSTUVWXYZ abcdefghijklmn opqrstuvwxyz 1234567890 !@#\$%&*()? Æ È Ò â □ Ø ñ</p>	<p>FONT 42 ABCDEFGH IJKLMNOPQ RSTUVWXYZ abcdefghijklmn opqrstuvwxyz 1234567890 !@#\$%&*()? Æ È Ò â □ Ø ñ</p>





Built in fonts for Pe-design NEXT

<p>FONT 43 ABCDEFGHIJ KLMNOPQ RSTUVWXYZ abcdefghijklmn opqrstuvwxyz 1234567890 !@#\$%&*()? ÆÈÔâ□Øñ</p>	<p>FONT 44 ABCDEFGHIJ KLMNOPQ RSTUVWXYZ abcdefghijklmn opqrstuvwxyz 1234567890 !@#\$%&*()? ÆÈÔâ□Øñ</p>
<p>FONT 45 ABCDEFGHIJ KLMNOPQ RSTUVWXYZ abcdefghijklmn opqrstuvwxyz 1234567890 !@#\$%&*()? ÆÈÔâ□Øñ</p>	<p>FONT 46 ABCDEFGHIJ KLMNOPQ RSTUVWXYZ abcdefghijklmn opqrstuvwxyz 1234567890 !@#\$%&*()? ÆÈÔâ□Øñ</p>
<p>FONT 47 ABCDEFGHIJ KLMNOPQ RSTUVWXYZ abcdefghijklmn opqrstuvwxyz 1234567890 !@#\$%&*()? ÆÈÔâ□Øñ</p>	<p>FONT 48 ABCDEFGHIJ KLMNOPQ RSTUVWXYZ abcdefghijklmn opqrstuvwxyz 1234567890 !@#\$%&*()? ÆÈÔâ□Øñ</p>





Built in fonts for Pe-design NEXT

<p>FONT 49 A B C D E F G H I J K L M N O P Q R S T U V W X Y Z a b c d e f g h i j k l m n o p q r s t u v w x y z 1 2 3 4 5 6 7 8 9 0 ! @ # \$ % & * () ? Æ È Ô â □ Ø ñ</p>	<p>FONT 50 A B C D E F G H I J K L M N O P Q R S T U V W X Y Z a b c d e f g h i j k l m n o p q r s t u v w x y z 1 2 3 4 5 6 7 8 9 0 ! @ # \$ % & * () ? Æ È Ô â □ Ø ñ</p>
<p>FONT 51 A B C D E F G H I J K L M N O P Q R S T U V W X Y Z a b c d e f g h i j k l m n o p q r s t u v w x y z 1 2 3 4 5 6 7 8 9 0 ! @ # \$ % & * () ? Æ È Ô â □ Ø ñ</p>	<p>FONT 52 A B C D E F G H I J K L M N O P Q R S T U V W X Y Z a b c d e f g h i j k l m n o p q r s t u v w x y z 1 2 3 4 5 6 7 8 9 0 ! @ # \$ % & * () ? Æ È Ô â □ Ø ñ</p>





Built in fonts for Pe-design NEXT

<p>FONT 53 ABCDEFGH IJKLMNOPQ RSTUVWXYZ abcdefghijklmn opqrstuvwxyz 1234567890 !@#\$%&*()? Æ È Ô â □ Ø ñ</p>	<p>FONT 54 ABCDEFGH IJKLMNOPQ RSTUVWXYZ abcdefghijklmn opqrstuvwxyz 1234567890 !@#\$%&*()? Æ È Ô â □ Ø ñ</p>
<p>FONT 55 ABCDEFGH IJKLMNOPQ RSTUVWXYZ abcdefghijklmn opqrstuvwxyz 1234567890 !@#\$%&*()? Æ È Ô â □ Ø ñ</p>	<p>FONT 56 ABCDEFGH IJKLMNOPQ RSTUVWXYZ abcdefghijklmn opqrstuvwxyz 1234567890 !@#\$%&*()? Æ È Ô â □ Ø ñ</p>





Built in fonts for Pe-design NEXT

<p>FONT 57 ABCDEFGH IJKLMNOPQ RSTUVWXYZ abcdefghijklmn opqrstuvwxyz 1234567890 !@#\$%&*()? ÆÈÔâ□Øñ</p>	<p>FONT 58 ABCDEFGH IJKLMNOPQ RSTUVWXYZ abcdefghijklmn opqrstuvwxyz 1234567890 !@#\$%&*()? ÆÈÔâ□Øñ</p>
<p>FONT 59 ABCDEFGH IJKLMNOPQ RSTUVWXYZ abcdefghijklmn opqrstuvwxyz 1234567890 !@#\$%&*()? ÆÈÔâ□Øñ</p>	<p>FONT 60 ABCDEFGH IJKLMNOPQ RSTUVWXYZ abcdefghijklmn opqrstuvwxyz 1234567890 !@#\$%&*()? ÆÈÔâ□Øñ</p>





Embroidery Institute Tutorial for PE-Design 9

Built in fonts for Pe-design NEXT

<p>FONT 61 A B C D E F G H I J K L M N O P Q R S T U V W X Y Z a b c d e f g h i j k l m n o p q r s t u v w x y z 1 2 3 4 5 6 7 8 9 0 ! @ # \$ % & * () ? Æ È Ò â □ Ø ñ</p>	<p>FONT 62 A B C D E F G H I J K L M N O P Q R S T U V W X Y Z a b c d e f g h i j k l m n o p q r s t u v w x y z 1 2 3 4 5 6 7 8 9 0 ! @ # \$ % & * () ? Æ È Ò â □ Ø ñ</p>
<p>FONT 63 A B C D E F G H I J K L M N O P Q R S T U V W X Y Z a b c d e f g h i j k l m n o p q r s t u v w x y z 1 2 3 4 5 6 7 8 9 0 ! @ # \$ % & * () ? Æ È Ò â □ Ø ñ</p>	<p>FONT 64 Α Β Χ Δ Ε Φ Γ Η Ι Θ Κ Λ Μ Ν Ο Π Θ Ρ Σ Τ Υ ς Ω Ξ Ψ Ζ α β χ δ ε φ γ η ι ϑ κ λ μ ν ο π θ ρ σ τ υ ω ξ ψ ζ 1 2 3 4 5 6 7 8 9 0 ! ≡ # ∃ % & * () ? ∅ ∪ ™ ® □ ¬)</p>





Embroidery Institute Tutorial for PE-Design 9

Built in fonts for Pe-design NEXT

<p>FONT 65 A B C D E F G H I J K L M N O P Q R S T U V W X Y Z a b c d e f g h i j k l m n o p q r s t u v w x y z 1 2 3 4 5 6 7 8 9 0 ! @ # \$ % & * () ? Æ È Ò â □ Ø ñ</p>	<p>FONT 66 A B C D E F G H I J K L M N O P Q R S T U V W X Y Z a b c d e f g h i j k l m n o p q r s t u v w x y z 1 2 3 4 5 6 7 8 9 0 ! @ # \$ % & * () ? Æ È Ò â □ Ø ñ</p>
<p>FONT 67 A B C D E F G H I J K L M N O P Q R S T U V W X Y Z a b c d e f g h i j k l m n o p q r s t u v w x y z 1 2 3 4 5 6 7 8 9 0 ! @ # \$ % & * () ? Æ È Ò â □ Ø ñ</p>	<p><i>FONT 68</i> <i>A B C D E F G H</i> <i>I J K L M N O P Q</i> <i>R S T U V W X Y Z</i> <i>a b c d e f g h i j k l m n</i> <i>o p q r s t u v w x y z</i> <i>1 2 3 4 5 6 7 8 9 0</i> <i>! @ # \$ % & * () ?</i> <i>Æ È Ò â □ Ø ñ</i></p>





Embroidery Institute Tutorial for PE-Design 9

Built in fonts for Pe-design NEXT

<p>FONT 69 ABCDEFGH IJKLMNOPQ RSTUVWXYZ abcdefghijklmn opqrstuvwxyz 1234567890 !@#\$%&*()? ÆÈÔâ□Øñ</p>	<p>FONT 70 ABCDEFGH IJKLMNOPQ RSTUVWXYZ abcdefghijklmn opqrstuvwxyz 1234567890 !@#\$%&*()? ÆÈÔâ□Øñ</p>
<p>FONT 71 ABCDEFGH IJKLMNOPQ RSTUVWXYZ abcdefghijklmn opqrstuvwxyz 1234567890 !@#\$%&*()? ÆÈÔâ□Øñ</p>	<p>FONT 72 ABCDEFGH IJKLMNOPQ RSTUVWXYZ abcdefghijklmn opqrstuvwxyz 1234567890 !@#\$%&*()? ÆÈÔâ□Øñ</p>





Built in fonts for Pe-design NEXT

<p>FONT 73 ABCDEFGH IJKLMNOPQ RSTUVWXYZ abcdefghijklmn opqrstuvwxyz 1234567890 !@#\$%&*()? ÆÈÔâ□Øñ</p>	<p>FONT 74 ABCDEFGH IJKLMNOPQ RSTUVWXYZ abcdefghijklmn opqrstuvwxyz 1234567890 !@#\$%&*()? ÆÈÔâ□Øñ</p>
<p>FONT 75 ABCDEFGH IJKLMNOPQ RSTUVWXYZ abcdefghijklmn opqrstuvwxyz 1234567890 !@#\$%&*()? ÆÈÔâ□Øñ</p>	<p>FONT 76 ABCDEFGH IJKLMNOPQ RSTUVWXYZ abcdefghijklmn opqrstuvwxyz 1234567890 !@#\$%&*()? ÆÈÔâ□Øñ</p>





Embroidery Institute Tutorial for PE-Design 9

Built in fonts for Pe-design NEXT

<p>FONT 77 A B C D E F G H I J K L M N O P Q R S T U V W X Y Z abcdefghijklmnopqrstuvwxyz opqrstuvwxyz 1234567890 !@#\$%&*()? Æ È Ò â □ Ø ñ</p>	<p>FONT 78 A B C D E F G H I J K L M N O P Q R S T U V W X Y Z abcdefghijklmnopqrstuvwxyz opqrstuvwxyz 1234567890 !@#\$%&*()? Æ È Ò â □ Ø ñ</p>
<p><i>FONT 79</i> <i>A B C D E F G H</i> <i>I J K L M N O P Q</i> <i>R S T U V W X Y Z</i> <i>abcdefghijklmnopqrstuvwxyz</i> <i>opqrstuvwxyz</i> <i>1234567890</i> <i>!@#\$%&*()?</i> <i>Æ È Ò â □ Ø ñ</i></p>	<p><i>FONT 80</i> A B C D E F G H I J K L M N O P Q R S T U V W X Y Z abcdefghijklmnopqrstuvwxyz opqrstuvwxyz 1234567890 !@#\$%&*()? Æ È Ò â □ Ø ñ</p>





Embroidery Institute Tutorial for PE-Design 9

Built in fonts for Pe-design NEXT

<p>FONT 81 A B C D E F G H I J K L M N O P Q R S T U V W X Y Z a b c d e f g h i j k l m n o p q r s t u v w x y z 1 2 3 4 5 6 7 8 9 0 ! @ # \$ % & * () ? Æ È Ò â □ Ø ñ</p>	<p><i>FONT 82</i> <i>A B C D E F G H</i> <i>I J K L M N O P Q</i> <i>R S T U V W X Y Z</i> <i>a b c d e f g h i j k l m n</i> <i>o p q r s t u v w x y z</i> <i>1 2 3 4 5 6 7 8 9 0</i> <i>! @ # \$ % & * () ?</i> <i>Æ È Ò â □ Ø ñ</i></p>
<p>FONT 83 A B C D E F G H I J K L M N O P Q R S T U V W X Y Z a b c d e f g h i j k l m n o p q r s t u v w x y z 1 2 3 4 5 6 7 8 9 0 ! @ # \$ % & * () ? Æ È Ò â □ Ø ñ</p>	<p>FONT 84 A B C D E F G H I J K L M N O P Q R S T U V W X Y Z a b c d e f g h i j k l m n o p q r s t u v w x y z 1 2 3 4 5 6 7 8 9 0 ! @ # \$ % & * () ? Æ È Ò â □ Ø ñ</p>





Built in fonts for Pe-design NEXT

<p>FONT 85 ABCDEFGH IJKLMNOPQ RSTUVWXYZ abcdefghijklmn opqrstuvwxyz 1234567890 !@#\$%&*()? ÆÈÔâ□Øñ</p>	<p>FONT 86 ABCDEFGH IJKLMNOPQ RSTUVWXYZ abcdefghijklmn opqrstuvwxyz 1234567890 !@#\$%&*()? ÆÈÔâ□Øñ</p>
<p>FONT 87 ABCDEFGH IJKLMNOPQ RSTUVWXYZ abcdefghijklmn opqrstuvwxyz 1234567890 !@#\$%&*()? ÆÈÔâ□Øñ</p>	<p>FONT 88 ABCDEFGH IJKLMNOPQ RSTUVWXYZ abcdefghijklmn opqrstuvwxyz 1234567890 !@#\$%&*()? ÆÈÔâ□Øñ</p>





Embroidery Institute Tutorial for PE-Design 9

Built in fonts for Pe-design NEXT

<p>FONT 89 ABCDEFGH IJKLMNOPQ RSTUVWXYZ abcdefghijklmn opqrstuvwxyz 1234567890 !@#\$%&*[]? Æ È Ô â □ Ø ñ</p>	<p>FONT 90 ABCDEFGH IJKLMNOPQ RSTUVWXYZ abcdefghijklmn opqrstuvwxyz 1234567890 !@#\$%&*()? Æ È Ô â □ Ø ñ</p>
<p>FONT 91 ABCDEFGH IJKLMNOPQ RSTUVWXYZ abcdefghijklmn opqrstuvwxyz 1234567890 !@#\$%&*()? Æ È Ô â □ Ø ñ</p>	<p>FONT 92 ABCDEFGH IJKLMNOPQ RSTUVWXYZ abcdefghijklmn opqrstuvwxyz 1234567890 !@#\$%&*()? Æ È Ô â □ Ø ñ</p>





Embroidery Institute Tutorial for PE-Design 9

Built in fonts for Pe-design NEXT

<hr/> <p><i>FONT 93</i> <i>A B C D E F G H</i> <i>I J K L M N O P Q</i> <i>R S T U V W X Y Z</i> <i>abcdefghijklmnopqrstuvwxyz</i> <i>opqrstuvwxyz</i> <i>1234567890</i> <i>!@#\$%&*()?</i> <i>ÀÊËÔâ¥Ðñ</i></p>	<p>FONT 94 ABCDEF G H I J K L M N O P Q R S T U V W X Y Z abcdefghijklmnopqrstuvwxyz opqrstuvwxyz 1234567890 !@#\$%&*()? ÀÊËÔâ¥Ðñ</p>
<p>FONT 95 ABCDEF G H I J K L M N O P Q R S T U V W X Y Z abcdefghijklmnopqrstuvwxyz opqrstuvwxyz 1234567890 !@#\$%&*()? ÀÊËÔâ¥Ðñ</p>	

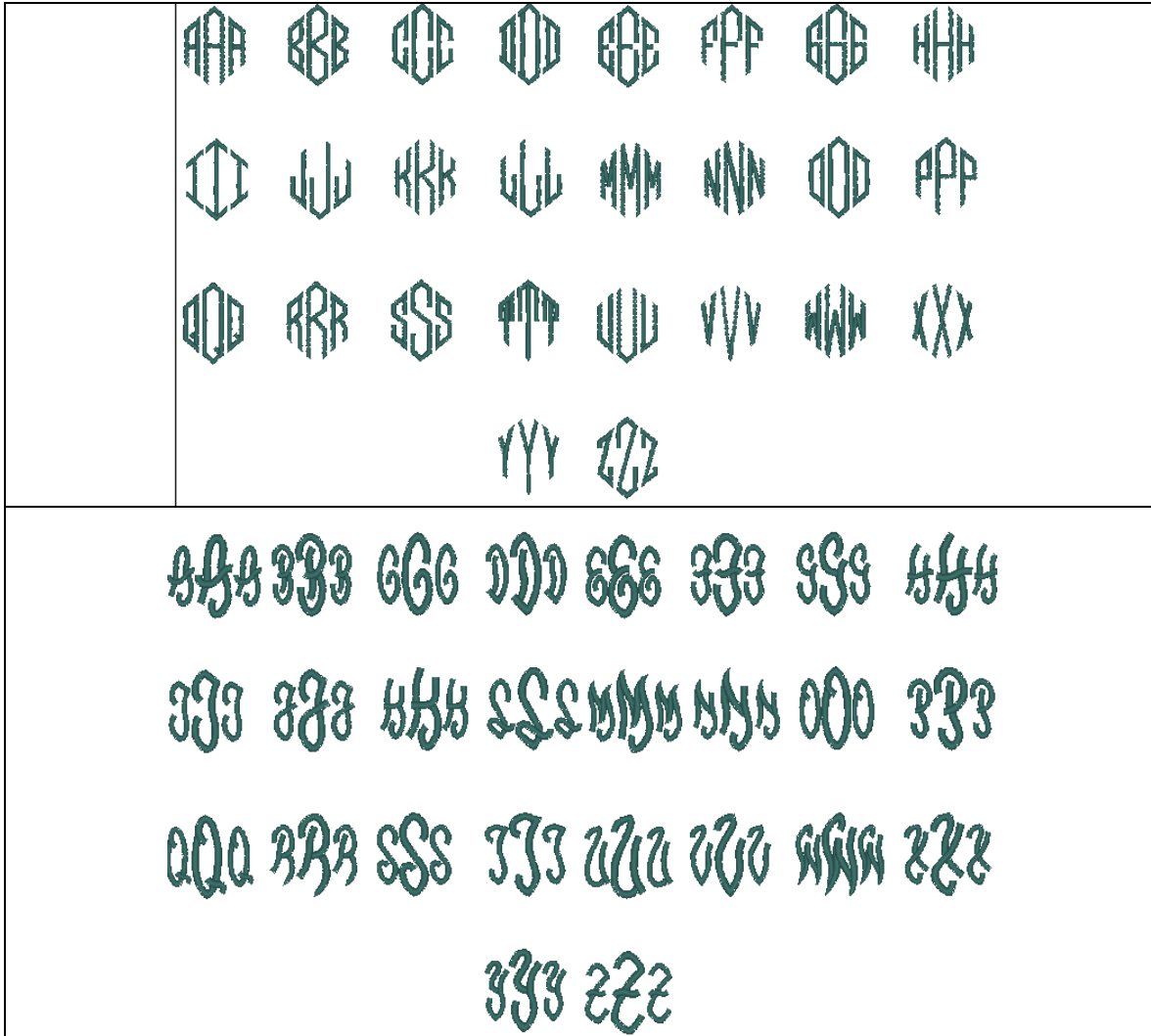




Embroidery Institute Tutorial for PE-Design 9

Built in fonts for Pe-design NEXT

Built in monograms





Embroidery Institute Tutorial for PE-Design 9

Built in fonts for Pe-design NEXT

Small Text font

<p>ABCDEFGHIJKLMN OPQRSTUVWXYZ W XYZ abcdefghijklmn opqrstuvwxyz 1234567890 !@□□□&□()? ÆØöñâ</p>	<p>ABCDEFGHIJKLMN OPQRSTUVWXYZ W XYZ abcdefghijklmn opqrstuvwxyz 1234567890 !@□□□&□()? ÆØöñâ</p>
<p><i>ABCDEFGHIJKLMN OPQRSTUVWXYZ W XYZ abcdefghijklmn opqrstuvwxyz 1234567890 !@□□□&□()? ÆØöñâ</i></p>	<p>ABCDEFGHIJKLMN OPQRSTUVWXYZ W XYZ abcdefghijklmn opqrstuvwxyz 1234567890 !@□□□&□()? ÆØöñâ</p>
<p><i>ABCDEFGHIJKLMN OPQRSTUVWXYZ W XYZ abcdefghijklmn opqrstuvwxyz 1234567890 !@□□□&□()? ÆØöñâ</i></p>	

