


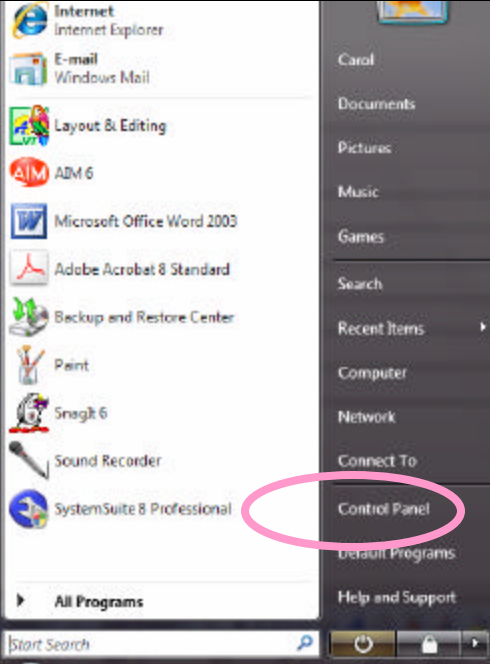
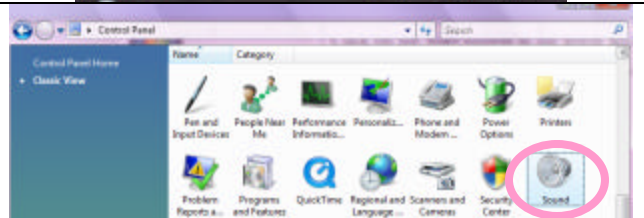
If you have Realtek speakers you can increase the sound coming out of them. There are three sets of directions depending on the version of drivers you have installed on your computer. The images below were created from Windows Vista for the first two methods.

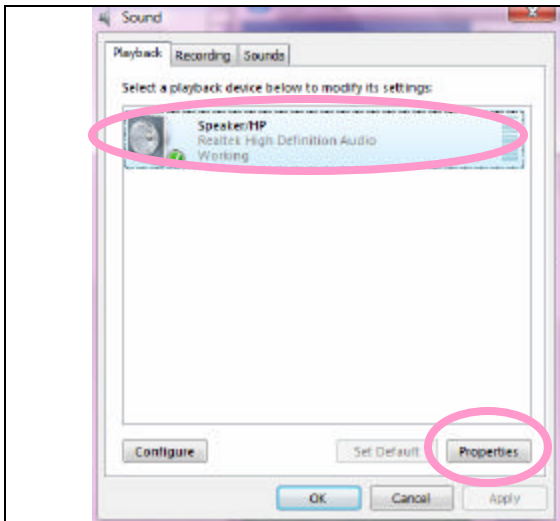
I have spent hours talking to various techs and engineers about sound problems. There are so many different answers and problems. Anything from settings in computer to bad speakers can cause low volume. If you can't hear the avi files, I suggest you try to download the latest drivers for your speakers, check to see if there is a built in equalizer for your sound card, if so, open the equalizer and increase the sound or purchase head phones.

If you have lost your sound after installing Windows Vista Service Pack, check your computer manufacturer's web site for information.

[http://esupport.sony.com/US/perl/swu-download.pl?mdl=VGNCR116E&upd\\_id=3466&os\\_id=28](http://esupport.sony.com/US/perl/swu-download.pl?mdl=VGNCR116E&upd_id=3466&os_id=28)

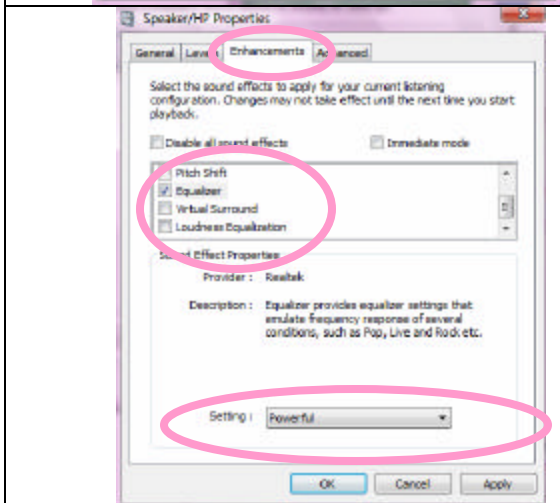
#### Method 1 to increase sound output if you have Realtek speakers – Windows Vista

	Click on the Start Button in the lower left side of your computer screen.
	Click on Control Panel.
	Click on the Sound Icon



Click on the picture of the speaker to select it.

Click on the Properties Button.



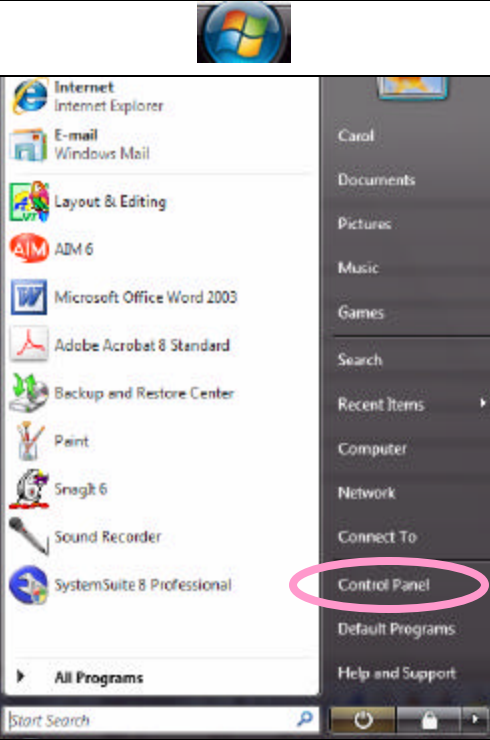
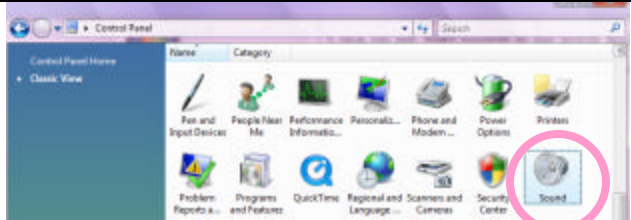
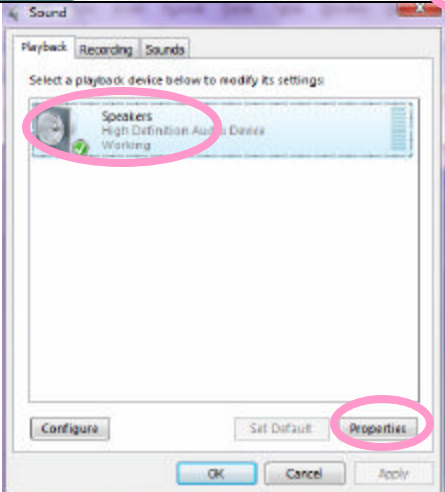
Click on the Enhancements Tab.

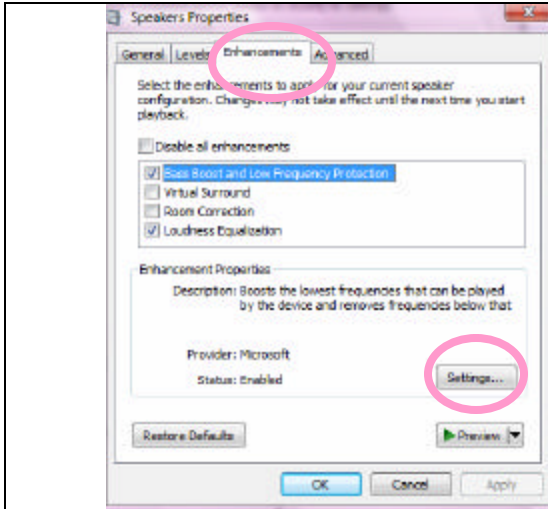
Put a check mark in front of Equalizer.

Scroll through the settings and click on Powerful.

Click Apply and then OK.

## Method 2 – Windows Vista

 <p>A screenshot of the Windows Vista Start menu. The Start button is visible at the top left. The Start menu is open, showing a list of installed applications on the left and a list of system settings on the right. The 'Control Panel' option is highlighted with a pink oval.</p>	<p>Click on the Start Button in the lower left side of your computer screen.</p> <p>Click on Control Panel.</p>
 <p>A screenshot of the Windows Vista Control Panel window. The 'Sound' icon is highlighted with a pink oval.</p>	<p>Click on the Sound Icon.</p>
 <p>A screenshot of the Windows Vista Sound Properties dialog box. The 'Speakers' icon is highlighted with a pink oval. The 'Properties' button is also highlighted with a pink oval.</p>	<p>Click on the picture of the speaker to select it.</p> <p>Click on the Properties Button.</p>



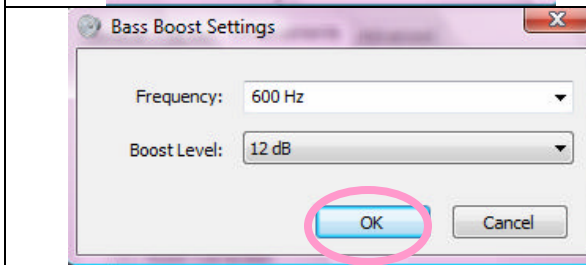
Click on the Enhancements tab.

Place check mark in  
Bass Boos and Low Frequency  
Protection

And

Loudness Equalization.

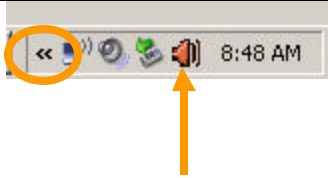


Click on Settings




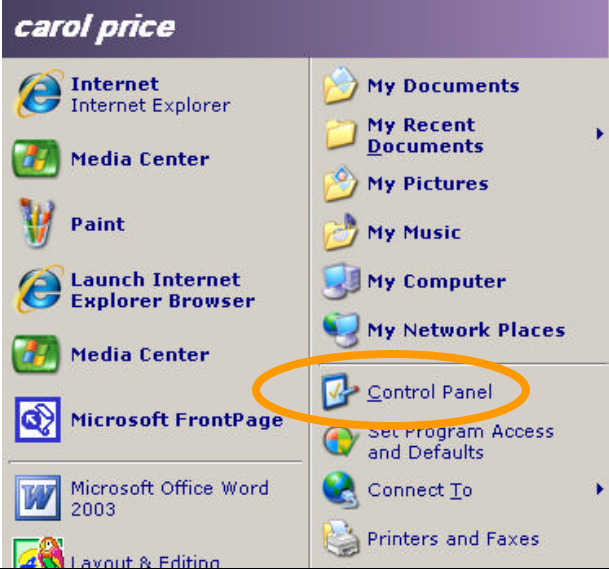
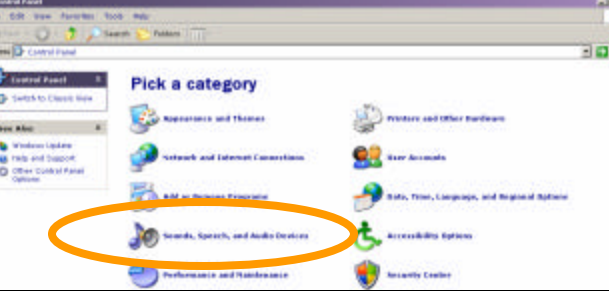
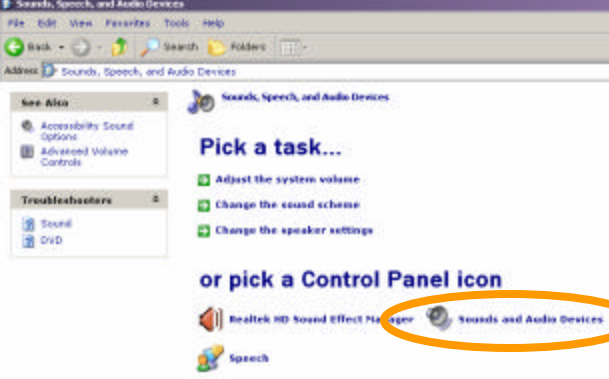
Choose a Frequency and Boost level  
that increase the output to level that  
you need.

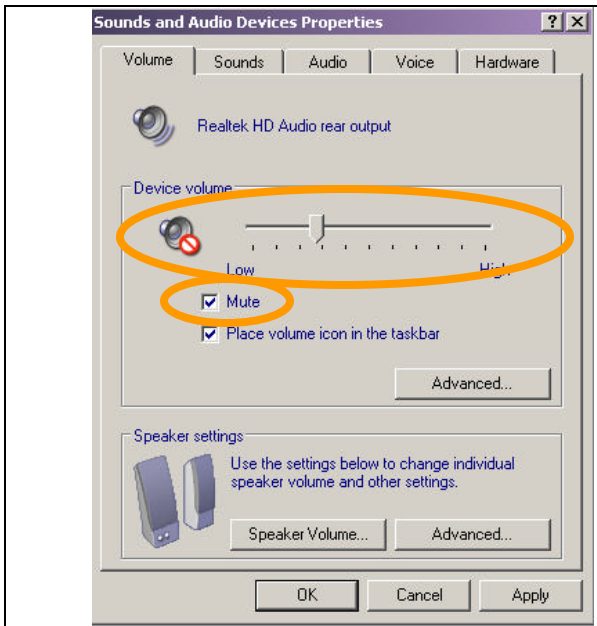
Click OK

If you have the RealTek HD Audio Manager on your computer you can increase the volume from your speakers:

	<p>In the lower RIGHT hand corner of your computer screen look for the RED speaker icon. You might need to expand out the view here by click on the left pointing double arrow. Click on the Speaker icon to open the RealTek HD Audio Manager.</p>
	<p>Click on the Sound Effect Tab.</p> <p>Notice the Equalizer portion? Right now all the bars are set to the center.</p>
	<p>Click on each white box in the Equalizer and drag it up.</p> <p>If you still need more volume move the slider to the right</p> <p>Click OK</p>

If you have Windows XP

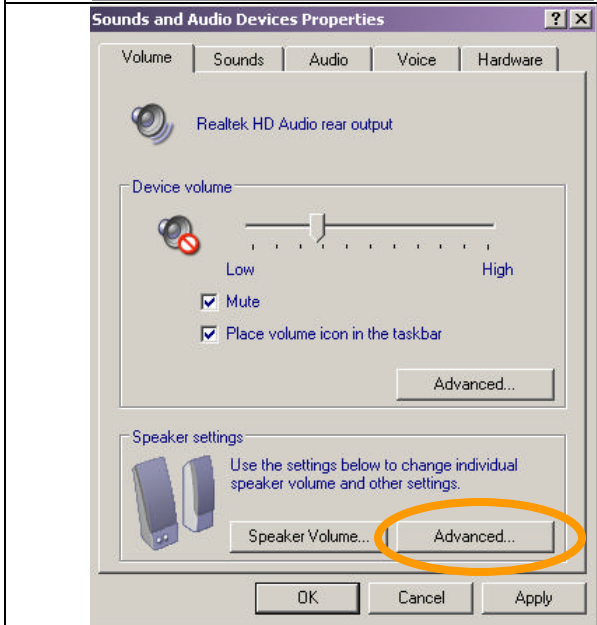
	<p>Click on the Start button in the lower left side of your computer screen.</p>
	<p>Click on Control Panel.</p>
	<p>Click on Sounds, Speech and Audio Devices</p>
	<p>Click on Sounds and Audio Devices</p>



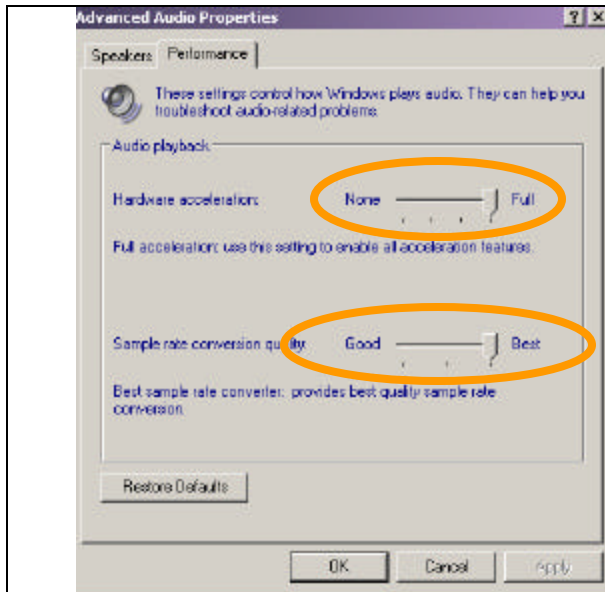
In the Volume Tab:

Move the slider for Device volume to the right to increase sound.

Remove the check mark in front Mute if it is marked.



In the Speaker Setting area, click on the Advanced button.



Click on the Performance Tab.

Make sure the Hardware acceleration and the Sample rate conversion quality are both set to the highest settings.

Click on OK